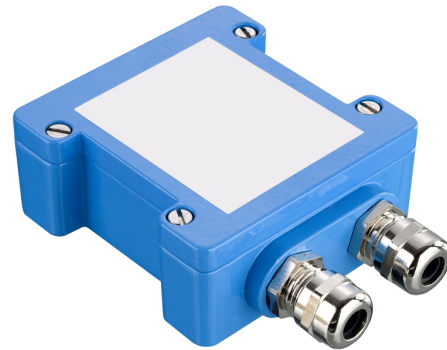


- Designed for use only with Penny & Giles ICT and SLT190 series linear position transducers
- 10-60 Vdc input supply voltage
- 0.5 to 4.5 Vdc standard output signal
- Optional range of voltage output signals
- Optional 4-20mA current output signal
- Optional PWM output signal
- IP66 enclosure with DIN rail attachment detail or IP68 metal enclosure
- User adjustable gain and zero settings
- CE approved



The EICT signal-conditioning module has been specifically designed to operate with the ICT and SLT190 range of contactless, linear position transducers.

This module incorporates a high-performance circuit that drives the transducer and provides a choice of output signals with zero and gain adjustment for simple user configuration. The module can be supplied in a choice of enclosures, with sealing to IP66 or IP68

The module operates from a 10-60 Vdc supply voltage and provides a range of outputs which can be configured by the user. The module is matched to the ICT or SLT190 transducer by a plug-in Sensor Calibration Module Card (SCMC).

SPECIFICATIONS

ELECTRICAL

SUPPLY VOLTAGE	10-60Vdc unregulated for standard voltage output (EICT/EICTM only) 10-30Vdc unregulated for extended voltage output group 1 (VM card fitted) 13.5-30Vdc unregulated for extended voltage output group 2 (VM card fitted) 10-30Vdc unregulated for current output (CM card fitted) 10-30Vdc unregulated for pulse width modulated output (PWM card fitted) Or ±10-30Vdc unregulated (all configurations expect voltage group 2) ±13.5-30Vdc unregulated (extended output voltage group 2)
SUPPLY CURRENT	10mA maximum (EICT/EICTM only) 19mA maximum (VM card fitted) 12.6mA maximum plus output current (CM card fitted) 13mA maximum (PWM card fitted)
POWER-ON SETTLEMENT	<300ms (within 0.25% of final output)
EICT/EICTM TEMPERATURE COEFFICIENT	<±200ppm/°C <±300ppm/°C if fitted with VM card

OUTPUTS

STANDARD VOLTAGE OUTPUT	0.5-4.5Vdc (EICT/EICTM only)
EXTENDED VOLTAGE OUTPUT GROUP 1	0-5Vdc (VM card fitted) ±2.5Vdc (VM card fitted) ±5Vdc (VM card fitted)
EXTENDED VOLTAGE OUTPUT GROUP 2	0-10Vdc (VM card fitted) ±7.5Vdc (VM card fitted) ±10Vdc (VM card fitted)
CURRENT OUTPUT	4-20mA
PULSE WIDTH MODULATION OUTPUT	TTL level compatible signal with a 10-90% duty cycle
OUTPUT FREQUENCY	100, 130 310 or 1000Hz (user selectable)
FREQUENCY ACCURACY	±10%
LOGIC LEVEL	High output: 4.5±0.5Vdc, Low output <0.4Vdc
OUTPUT RANGE	10% (zero) to 90% (span)
OUTPUT NOISE	<5mVrms
OUTPUT LOAD	10kΩ minimum resistive to 0V line
FREQUENCY RESPONSE	30Hz (-3dB), equivalent to 5ms output lag

MECHANICAL

EICT/EICTM BULKHEAD SCREW TORQUE	4Nm
EICT/EICTM LID SCREW TORQUE	2Nm

ENVIRONMENTAL

EICT/EICTM TEMPERATURE RANGE	Operating: 0°C to +70°C Storage: -40°C to +85°C
SEALING	EICT – IP66 EICTM – IP68